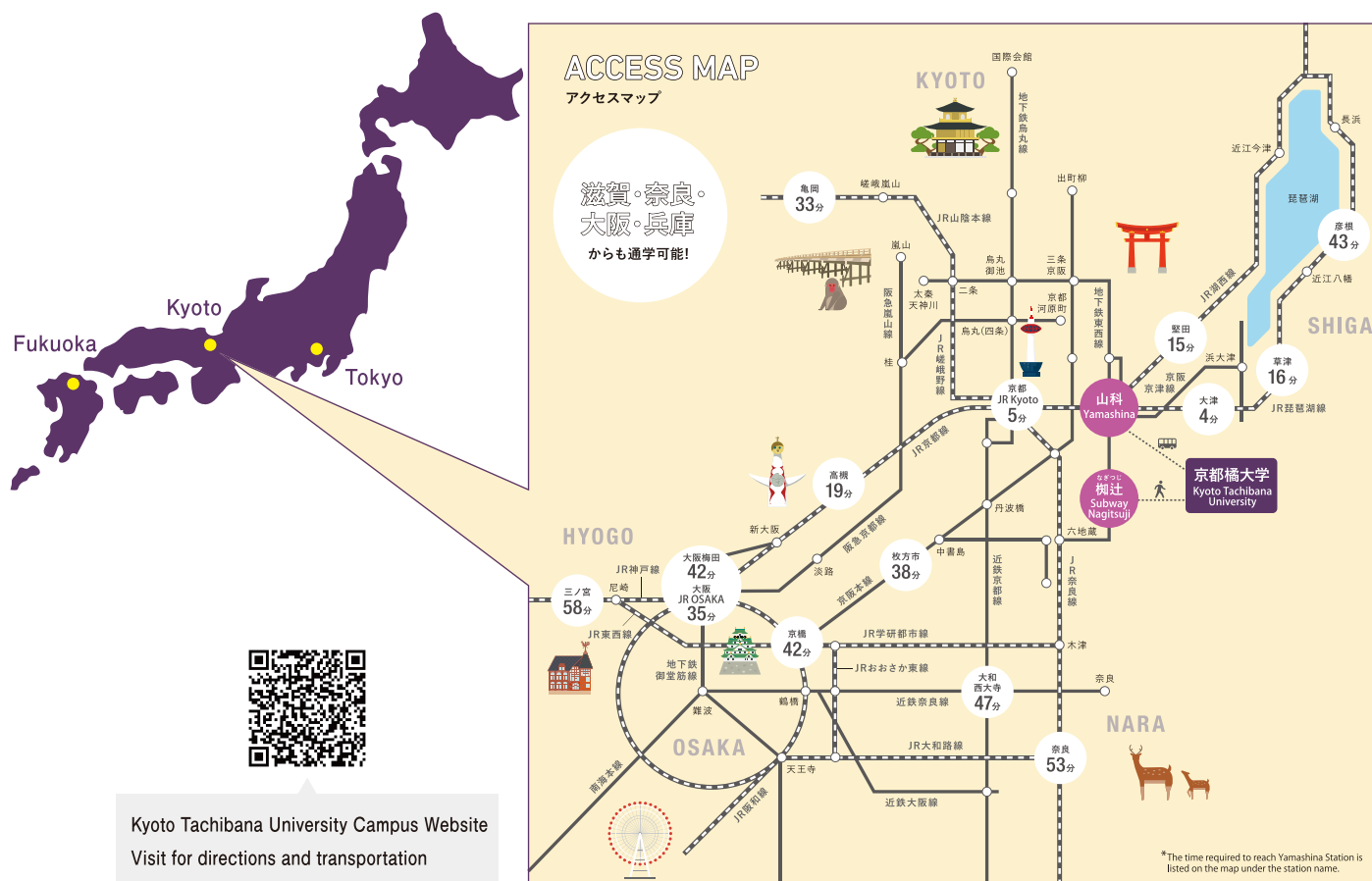


Guide for International Students



A New Choice to Consider



Kyoto Tachibana University Campus Website
Visit for directions and transportation

Access to closest stations

- 5 minutes from JR Kyoto Station to Yamashina Station
- 35 minutes from JR Osaka Station to Yamashina Station by special rapid service
- Approximately 1 hour from JR Sannomiya Station to Yamashina Station

Access to campus from closest stations

- Approximately 15 minutes by direct bus from Yamashina Station
- Approximately 24 minutes by direct bus from Kyoto Station

Access to campus from Nagitsuji Station on the subway

- Get off at Nagitsuji Station on the Kyoto Municipal Subway Tozai Line and walk east for about 15 minutes
- About 8 minutes by free shuttle bus from Aeon Town Yamashina Nagitsuji

We also offer housing support for international students



Kyoto Tachibana University
Official SNS

LINE



Instagram



X
(旧Twitter)



Inquiries



京都橘大学 国際系学部グループ
〒607-8175 京都市山科区大宅山田町 34

075-574-4365

075-574-4126

Academic Affairs Global Education
Kyoto Tachibana University
34 Yamada-cho, Oyake, Yamashina-ku,
Kyoto, 607-8175, Japan

aca-gl@tachibana-u.ac.jp

- A University Training Highly Skilled, Well-educated Professionals -

[Our educational and academic philosophy: Independence, Coexistence, and Practical Knowledge]

- The ability to be independent and consider, assess, and determine matters from various perspectives
- An attitude of coexistence to understanding people from various global cultures and economic systems
- A social contribution of practical knowledge gained in the field, on campus and off



Study in Kyoto

Kyoto was once the capital of Japan in ancient times, and it is home to many historical buildings and traditional shrines and temples. It is a place where Japanese history and culture are alive. It is also the ideal location to learn about traditional Japanese culture, with a beautiful, harmonious blend of nature and historical buildings. Learn about the culture and wisdom of Kyoto, a place steeped in Japanese traditions.



An Ever-Evolving University!

Three New Departments Planned to Open in April 2026! 18 Departments in 10 Faculties All on One Campus

We are a comprehensive university with one campus that brings together learning in a wide range of fields, including the arts, engineering, the humanities, international studies, education, social studies, and medicine. Because it is all in one place, we can achieve abundant learning that goes beyond individual fields, meet many colleagues who nurture a variety of dreams, broaden our horizons, and cultivate solid abilities to realize our own aspirations. Furthermore, in anticipation of advancements in AI and technology, we plan to open new departments in 2026, including the Department of Digital Media at the Faculty of Digital Media* and the Department of Robotics at the Faculty of Engineering*.

* The names of departments and faculties are provisional, with the opening planned for April 2026 (planning currently underway). All information is tentative and subject to change.

Eligible Faculties and Departments for International Student Entrance Exams

NEW NEW Faculty of Digital Media*

NEW • Department of Digital Media*

Faculty of Engineering

NEW • Department of Robotics*
• Department of Information and Computer Science
• Department of Architectural Design

Faculty of Humanities

• Department of Japanese Language and Literature
(Course in Japanese Language and Literature / Course in International Japanese Culture)
• Department of History
• Department of Historical Heritage

Faculty of English and Global Communication

• Department of English and Global Communication (Major of Global Symbiosis)

Faculty of Comprehensive Psychology

• Department of Comprehensive Psychology

Faculty of Economics

• Department of Economics (Major of Economics)
• Department of Economics (Major of Contemporary Society)

Faculty of Business Administration

• Department of Business Administration (Major of Business Administration)

Faculty of Human Development and Education

• Department of Childhood Education

Faculty of Nursing

• Department of Nursing

Faculty of Health Sciences

• Department of Physical Therapy
• Department of Paramedic Science
• Department of Occupational Therapy
• Department of Medical Technology and Science
• Department of Clinical Engineering*

Graduate Schools

Graduate School of Humanities

History and Culture Major
• Master's Program in History and Culture
• Doctoral Program in History and Culture

Graduate School of Contemporary Business

Management Major
• Master's Program in Management
• Doctoral Program in Management

Graduate School of Informatics

Informatics Major
• Master's Program in Informatic

Graduate School of Nursing

Nursing Major
• Master Program in Nursing Science
• Doctoral Program in Nursing Science

Graduate School of Health Sciences

Health Sciences Major
• Master's Program in Health Sciences
• Doctoral Program in Health Sciences

Faculties and Departments

Faculty of Digital Media* NEW

Department of Digital Media*

- Learn about VR and games, anime, music, and other media content in which Japan excels
- Learn the basics of information technology and design to create next-generation content and systems
- An expansive curriculum in both the humanities and the sciences
- Aim to become a creator and engineer in the digital age



Faculty of Engineering

Department of Robotics* NEW

- We train robotics specialists by covering mechanical systems, advanced AI technologies, and mechanical systems

Department of Architectural Design

- We offer three domains: architectural design, interior design, and environmental design

Department of Information and Computer Science

- Learn in-depth about the basics and applications of information engineering needed in the super AI era
- State-of-the-art laboratories with 3D printers, VR goggles, and IoT devices



Faculty of English and Global Communication

Department of English and Global Communication (Major of Global Symbiosis) NEW

- Cultivate the ability to work in global companies and on the international stage using Japanese, English, and your native language
- Learn together with students from all over the world and acquire diverse values in the international city of Kyoto
- Three areas for work in the international community (international relations, international tourism, international economics)
- Learn practical business skills, for example through internships in collaboration with local companies



Faculty of Humanities

Department of Japanese Language and Literature (Course in Japanese Language and Literature / Course in International Japanese Culture)

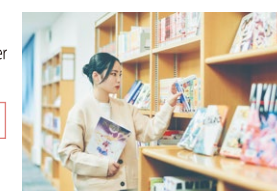
- In-depth learning about classical to modern literature and Japanese language education
- Explore traditional culture and subcultures as well as learn about media creation techniques

Department of History

- Come in contact with original historical documents and do proper fieldwork that you can only do on the historical stage that is Kyoto

Department of Historical Heritage

- Experience the "real deal" through fieldwork using the latest historical heritage survey techniques



Faculty of Comprehensive Psychology

Department of Comprehensive Psychology

- All students gain a grounding in data science, the basis of psychology
- Learn broadly about psychology, from the basics to its applications
- Aim to obtain dual national qualifications as "licensed psychologist" and "clinical psychologist"
- Gain expertise ranging from clinical to business situations



Faculty of Economics

Department of Economics (Major of Economics)

- Learn the basics of data science in economics
- We offer leadership education and plenty of projects in collaboration with companies and local governments etc.

Department of Economics (Major of Contemporary Society)

- Field exploration that dives deep into actual settings in contemporary society
- Cultivate the ability to design new societies and lifestyles



Faculty of Business Administration

Department of Business Administration (Major of Business Administration)

- Learn business skills relating to data science statistics, bookkeeping, and business English that have real world application
- Learn practically in collaboration with companies
- Entrepreneurship education to develop business models and train entrepreneurs
- We invite managers to give lectures that deepen learning from various vantage points



* The names of departments and faculties are provisional, with the opening planned for April 2026 (planning currently underway). All information is tentative and subject to change.

Education Embracing International Students!

| Guidance in Small Groups for Each Student

We have a staff of around 250 full-time professors for around 7,000 students to ensure each student is treated individually. Approximately 40% of all classes have no more than 20 students, allowing for small group instruction.

| International students gathering from all over the world

International students from all over the world gather on our campus to deepen their learning together with Japanese students. You can live full student lives in an environment of living history and culture that is unique to Kyoto, a city emblematic of traditional Japanese culture.

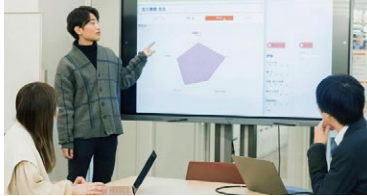
| Complete Japanese Language Education

Students from all regions study together in small classes of no more than 15 students. Japanese language classes are held three times weekly for first- and second-year students, and students aim to acquire the necessary Japanese language ability needed to study in university. We also offer courses on business Japanese that are needed for post-graduation careers.

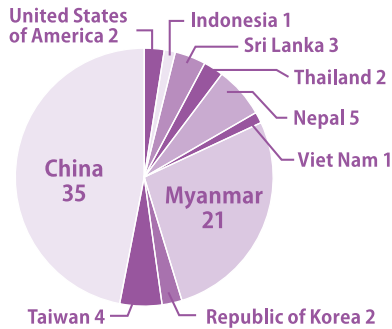
| Cross-Faculty/Cross-Departmental Crossover Education

Department of Digital Media	Department of Robotics	Department of Information and Computer Science
Department of Architectural Design	Department of Japanese Language and Literature	Department of English and Global Communication
Department of Comprehensive Psychology	Department of Economics	Department of Business Administration

We promote crossover education that lets students take classes from other departments and work with students from other departments to engage with issues from companies and governments. You will learn across the humanities-sciences divide and cultivate the ability to think freely and solve problems.



Number of international Students enrolled by home country



| Educational Support for International Students

There are a large number of language study books available for loan at the Learning Commons, a place where students can learn Japanese and other languages. There are also dedicated support students and teachers here who are available to help with writing reports and papers. Additionally, advisors, Japanese language teachers, staff at the International Center, and departmental staff will all work together to support students in their studies.

International Student Voices!

Department of Information and Computer Science / Second Year
Fang Yuanbei (China)

Kyoto Tachibana University provides a wide range of events and club activities where international and Japanese students can socialize, making it easy to find new friends. You can live your university life with peace of mind as teachers and staff are easy to approach if you have questions. When it comes to learning, we offer Japanese language classes for international students as well as a support for writing essays and assignments, allowing you to improve your communication and writing skills. Let's enjoy a fulfilling student life together at Kyoto Tachibana University.



Department of Architectural Design/Second Year
Han Htun Zin (Myanmar)

I had an interest in architecture, so I was drawn to the idea of studying in Kyoto, where there are so many World Heritage Sites and other historical buildings still standing, and I picked Kyoto Tachibana University. There are plenty of scholarships and employment support for international students, and the small class sizes shrink the gap between students and teachers, so that you feel free to ask questions about what you don't understand, letting you study with peace of mind. Drawing architectural plans and making models based on that is practical and a lot of fun. It's very fulfilling to be able to study while experiencing the history and culture of Kyoto.



Fulfilling Student Life!

| Ample International Exchange Events

We offer various international exchange events for international and Japanese students. Students can deepen their understanding of various cultures and interact with a wide variety of students through these events.

Example of Events

● Welcome and farewell parties for international students

Welcome and farewell parties are hosted by Japanese students, senior students, and university employees. They offer the chance to build connections among students.

● Multicultural Exchange Bus Tours for International and Japanese Students

We regularly offer day trips by bus to deepen students' understanding of Japanese culture. We visit famous places, mostly in the Kansai region, to experience Japanese history and culture. (Todai-ji Temple, Ise Grand Shrine, Mt. Hiei Enryakuji Temple, and more.)

● Other Events

We also offer Christmas parties, Halloween parties, seasonal events, sports events with Japanese students, and more.



International Exchange Club

citrus

We plan and run exchange events with international students. Anyone can easily participate. They're opportunities to make new friends.



Detailed Career Support!

Kyoto Tachibana University's Total Support for Job Hunting At a Glance

* The figures were calculated for AY2024.



Graduates' VOICE!

Department of Architectural Design/
AY2024 graduation
Lu Keyu (China)

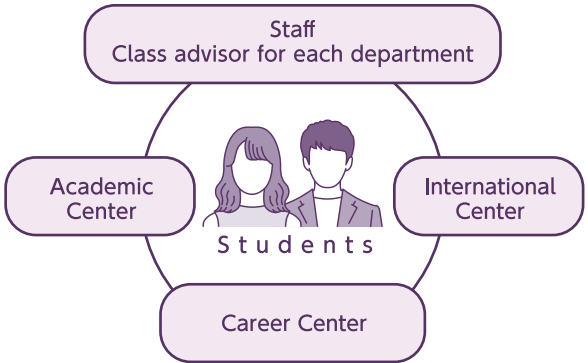
I chose Kyoto Tachibana University because I was attracted by the opportunity to interact with students from various fields on the same campus. During my fourth-year "graduation project," my seminar friends and me worked on a joint project more or less every day from morning to evening, which became a source of priceless memories. I was worried about finding a job in Japan after graduation, but the staff at the Career Center kindly responded to my various requests, for example about interviews and self-promotion. Thanks to their generous support, I could make up my mind to work for a Japanese company.

Works at Takamatsu Corporation Co., Ltd.



Supporting Every Student in Achieving a Compelling Career Path

Staff from every department work closely together to offer detailed support to each student so that they may craft their own plans for career and life. There are also dedicated staff members for international students at the Career Center so that students can get career advice.



| Employment Rate

More than 90% of students seeking employment are employed each year, reaching an employment rate well above the national average.



The number of companies accepting international students is growing too!!

Employment rate in Kyoto Prefecture

No. 1
Career development programs are carefully set up for each faculty. Many extracurricular programs have been prepared for different industries and occupations, offering steady support for each student to realize their dreams.

Source: Daigaku Tsushin Online announced the "2024 Employment Rate Ranking (for universities with over 1,000 graduates)"

Information on Entrance Exams for International Students

Requirements for International Student Applications

Those who apply as EJU Applicants must meet the following application requirements (1), (2) and (3).

Those who apply as University-original Applicants must meet the following application requirements (1), (2), and (4).

(1) Students must be foreign nationals

(2) Students must correspond to one of the following:

- a. Students who have completed or will complete the 12th year of a legitimate school education outside Japan by March, 2026.
- b. Students who have completed less than 12 years of legitimate school education outside Japan and have also completed a preparatory course or training course designated by the Minister of Education, Culture, Sports, Science and Technology. This also includes students who will complete training by March, 2026.
- c. Students who have completed or are expected to complete the curriculum at a designated school outside Japan by March 2026.
- d. Students who have completed or are expected to complete 12 years of study at an international school accredited by an international accreditation body (WASC, ACIS, CIS, NEASC, Cognia, COBIS) outside Japan by March 2026.
- e. Students who have obtained or are expected to obtain an International Baccalaureate, Abitur, Baccalaureate, GCEA Level, International A-Level, or European Baccalaureate qualification outside Japan by March 2026.
- f. Students who have passed an examination equivalent to completing 12 years of school education outside Japan and who will be 18 years old as of March 2026.
- g. Other students designated by the Minister of Education, Culture, Sports, Science and Technology.
- h. Students who are recognized as possessing qualifications equivalent to or higher than the above and who will be 18 years old as of March, 2026.

This includes students who have attended an elementary school, junior high school, high school, or secondary school in Japan for a total of three years or less.

(3) Students who have achieved the following benchmarks for Japanese (including writing) in any of the following sessions of the Examination for Japanese University Admission for International Students (EJU) tests administered by JASSO:

- AY2024 Round One (June) - AY2024 Round Two (November) - AY2025 Round One (June) - AY2025 Round Two (November)

Eligible Departments, etc.	Benchmark
Department of Digital Media / Department of Architectural Design/ Department of Japanese Language and Literature(Course in Japanese Language and Literature / Course in International Japanese Culture) / Department of History / Department of Historical Heritage / Department of Comprehensive Psychology / Department of Economics (Major of Economics) / Department of Economics (Major of Contemporary Society) / Department of Business Administration (Major of Business Administration)	240 points or higher
Department of Robotics / Department of Information and Computer Science / Department of English and Global Communication(International Symbiosis Major)	225 points or higher

(4) Students who have passed the N2 level of the Japanese Language Proficiency Test (JLPT) or equivalent.

* Students who reside outside Japan can only apply for Round One.

Entrance Examination Schedule

Category	Eligible Departments, etc.	Application Period	Examination Date	Announcement day of test results	Admission procedure deadline
Round One for EJU Applicants and Self-study Applicants	All advertising departments, etc.	Wednesday, October 1, 2025 to Wednesday, October 8, 2025	Friday, November 14	Monday, December 1	1st: Tuesday, December 16 2nd: Wednesday, January 7
Round Two for EJU Applicants and Self-study Applicants	All advertising departments, etc.	Wednesday, December 17, 2025 to Wednesday, December 24, 2025	Wednesday, February 11, 2026 (public holiday)	Friday, February 20	Lump sum payment: Tuesday, March 3
Round Three for EJU Applicants	Department of Robotics / Department of Information and Computer Science / Department of English and Global Communication(Major of Global Symbiosis)	Friday, February 13, 2026 to Friday, February 20, 2026	Friday, March 6	Wednesday, March 18	Lump sum payment: Monday, March 23

Selection Procedure

Category	Exam Subjects	Time	Selection Procedure
EJU Applicants	Documentary examination	—	Comprehensive evaluation through document screening and interview (100 points) *Individual interviews include an oral exam
	Interview	About 15 minutes	
Self-study Applicants	Documentary examination	—	Comprehensive evaluation through document screening, Japanese essay exam (100 points), interview (100 points), and awarded bonus points (see separate chart below) *Individual interviews include an oral exam
	Composition written in Japanese	60 minutes	
	Interview	About 15 minutes	

For Self-study Applicants Only

Japanese-Language Proficiency Test (JLPT)	N1	N2
Bonus Points	30 points	15 points

Exam fee ¥15,000

Previous Prompts (Japanese Essay)

Applicants can download previous prompts for the Japanese essay exams from the Kyoto Tachibana University Exam candidate page. We recommend that students considering applying as University-original applicants take advantage of this service.

For more details, please see the 2026 Requirements for International Student Applications, which will be released on the Exam candidate page at the end of July.

Student Fees and Scholarships

First Year Fees

Faculty	Department	Enrollment fee	Course fee	Educational enhancement fee	Total	Due upon enrollment
Faculty of Digital Media	Department of Digital Media	¥200,000	¥1,235,000	¥150,000	¥1,585,000	¥892,500
Faculty of Engineering	Department of Robotics	¥200,000	¥1,235,000	¥150,000	¥1,585,000	¥892,500
	Department of Information and Computer Science	¥200,000	¥1,235,000	¥150,000	¥1,585,000	¥892,500
	Department of Architectural Design	¥200,000	¥1,195,000	¥150,000	¥1,545,000	¥872,500
Faculty of Humanities	Department of Japanese Language and Literature	¥200,000	¥944,000	¥50,000	¥1,194,000	¥697,000
	Department of History	¥200,000	¥944,000	¥50,000	¥1,194,000	¥697,000
	Department of Historical Heritage	¥200,000	¥944,000	¥70,000	¥1,214,000	¥707,000
Faculty of English and Global Communication	Department of English and Global Communication	¥200,000	¥979,000	¥50,000	¥1,229,000	¥714,500
Faculty of Comprehensive Psychology	Department of Comprehensive Psychology	¥200,000	¥994,000	¥70,000	¥1,264,000	¥732,000
Faculty of Economics	Department of Economics	¥200,000	¥890,000	¥50,000	¥1,140,000	¥670,000
Faculty of Business Administration	Department of Business Administration	¥200,000	¥890,000	¥50,000	¥1,140,000	¥670,000

Scholarships (Undergraduates)

Reduction in tuition fees for international students studying at their own expense at Kyoto Tachibana University	Grant-type scholarship for financial aid of international students at Kyoto Tachibana University
Reduction of 30% in annual tuition fees (¥267,000 to ¥370,500/year) For all students * Limit on the number of students for second and subsequent year students * The amount reduced varies depending on residence status	Grant of 20,000 yen a month (¥240,000/year) Eligibility: Second and subsequent year students * Limit on the number of students

* There is an assessment of the student's residence status, financial situation, Japanese-language proficiency, grades, etc. after enrollment

Additionally, there are also many scholarships from various institutions outside the university!



Let's get to know the real Kyoto Tachibana University at OPEN CAMPUS!

6/7(SAT) • 8(SUN) 7/19(SAT) • 20(SUN) 8/2(SAT) • 3(SUN)

Opening hours: 10:00-15:00

PROGRAM

University introduction and entrance examination information (for international students)
Departmental introduction, mini-lecture, hands-on learning
Individual counseling with international student representatives
Campus tour
Student-led campus life introduction
Dining hall experience
Club planning



Scan this QR code for more details and to apply



Scan this QR code for information on entrance exams for international students