

# Guide for International Students



# A New Choice to Consider



## - A University Training Highly Skilled, Well-educated Professionals -

【Our educational and academic philosophy: Independence, Coexistence, and Practical Knowledge】

- The ability to be independent and consider, assess, and determine matters from various perspectives
- An attitude of coexistence to understanding people from various global cultures and economic systems
- A social contribution of practical knowledge gained in the field, on campus and off

Based on our educational and academic philosophy of Independence, Coexistence and Practical Knowledge, Kyoto Tachibana University trains students to be professionals who are active in their fields, who can gain knowledge and skills related to AI and IT, and independently create new value in a variety of ever-changing environments.



## Study in Kyoto

Kyoto was once the capital of Japan in ancient times, and it is home to many historical buildings and traditional shrines and temples. It is a place where Japanese history and culture are alive. It is also the ideal location to learn about traditional Japanese culture, with a beautiful, harmonious blend of nature and historical buildings.

Learn about the culture and wisdom of Kyoto,  
a place steeped in Japanese traditions.





# An Ever-Evolving University!

## 15 Departments in 9 Faculties and 5 Graduate Schools All on One Campus

Meet a variety of people with diverse dreams and develop a broad range of ideas and values through inter-faculty interactions on campus, including engineering, humanities, international studies, education, social studies, and medicine.

### Eligible Faculties and Departments for International Student Entrance Exams

#### Faculty of Engineering

- Department of Information and Computer Science
- Department of Architectural Design

#### Faculty of Humanities

- Department of Japanese Language and Literature (Course in Japanese Language and Literature / Course in International Japanese Culture)
- Department of History
- Department of Historical Heritage

#### Faculty of Comprehensive Psychology

- Department of Comprehensive Psychology

#### Faculty of Economics

- Department of Economics

#### Faculty of Business Administration

- Department of Business Administration (Major in Business Administration)

#### Faculty of English and Global Communication

- Department of English and Global Communication

#### Faculty of Human Development and Education

- Department of Childhood Education

#### Faculty of Nursing

- Department of Nursing

#### Faculty of Health Sciences

- Department of Physical Therapy
- Department of Occupational Therapy
- Department of Paramedic Science
- Department of Medical Technology and Science

### Coming Soon! 3 New Departments in 2026

- Department of Digital Media
- Department of Robotics
- Department of Clinical Engineering

\*Provisional names. Scheduled to open in April 2026. Plans are tentative and subject to change

### Graduate Schools

#### Graduate School of Humanities

- History and Culture Major
- Master's Program in History and Culture
  - Doctoral Program in History and Culture

#### Graduate School of Contemporary Business

- Management Major
- Master's Program in Management
  - Doctoral Program in Management

#### NEW Graduate School of Informatics

- Informatics Major
- Master's Program in Informatic

#### Graduate School of Nursing

- Nursing Major
- Master Program in Nursing Science
  - Doctoral Program in Nursing Science

#### Graduate School of Health Sciences

- Health Sciences Major
- Master's Program in Health Sciences
  - Doctoral Program in Health Sciences

## Departments and Courses

### Faculty of Engineering

- Department of Information and Computer Science
- Department of Architectural Design

The Department of Information and Computer Science trains IT specialists who can make use of AI, big data, IoT, and other cutting-edge information technologies to connect IT, people, and society. The Department of Architectural Design trains professionals to practice architectural design that responds to the needs of a new age in a wide range of fields.



### Faculty of Humanities

- Department of Japanese Language and Literature (Course in Japanese Language and Literature / Course in Calligraphy)
- Department of History
- Department of Historical Heritage

We offer a diverse, high level of research on culture here in Kyoto, with its long history and many traditions. Active practical training and fieldwork focused on Kyoto are features of every department. Study in Kyoto and experience its benefits and depth.



**New!**

**New International Japanese Culture Course Offered in the Department of Japanese Language and Literature**

Explore the value of both traditional Japanese culture and Japanese subcultures, including anime, manga, and video games, from a global perspective. Students will also learn about techniques for creating media, including illustration production and character design.



### Faculty of Comprehensive Psychology

- Department of Comprehensive Psychology

In this new faculty, students gain a comprehensive understanding of human emotion from various fields of psychology. The faculty incorporates knowledge from data science and an array of academic fields in education, society, engineering, and medicine.



### Faculty of Economics

- Department of Economics

In addition to gaining basic knowledge and skills in economics, students gain a broad perspective covering areas such as finance, industry, regional and international economics, public economy and policy, healthcare, social security, tourism, and culture.



### Faculty of Business Administration

- Department of Business Administration (Business Administration Major)

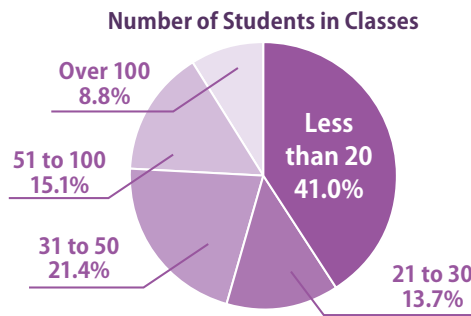
Students aim to gain expert knowledge and skills in business administration while also developing the ability to carefully analyze big data and other promising information in this age of AI. Students also develop the ability to utilize digital tools appropriately.



# Education Embracing International Students!

## | Guidance in Small Groups for Each Student

We have a staff of around 240 full-time professors for around 6,800 students to ensure each student is treated individually. More than 40% of all classes have fewer than 20 students, offering guidance in small groups.



## | Complete Japanese Language Education

Japanese language classes are held three times a week for first- and second-year students in small classes of less than 15 students, split into levels of ability, and students aim to acquire the necessary Japanese language ability needed to study in university. We also offer courses on business Japanese that are required for post-graduation careers.

## | Cross-Faculty/Cross-Departmental Crossover Education

Department of Information and Computer Science

Department of Architectural Design

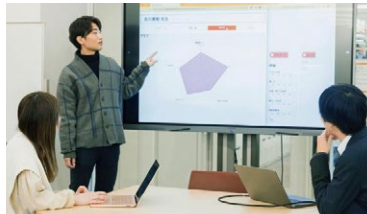
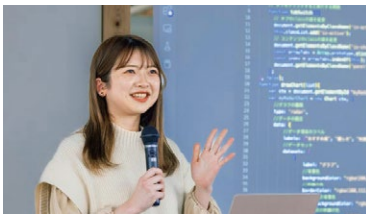
Department of Japanese Language and Literature

Department of Comprehensive Psychology

Department of Economics

Department of Business Administration

There are several cross-faculty/cross-departmental courses available. Students from a diverse range of fields study together, aiming to gain knowledge and skills that go beyond the boundaries of the humanities and sciences.



## | Educational Support for International Students

There are a large number of language study books available for loan at the Learning Commons, a place where students can learn Japanese and other languages. There are also dedicated support students and teachers here who are available to help with writing reports and papers. Additionally, advisors, Japanese language teachers, staff at the International Center, and departmental staff will all work together to support students in their studies.

### International Student Voices!

Faculty of Engineering, Department of Architectural Design/Third Year

**Liu Haolin** (China)

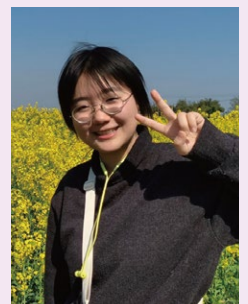
I chose Kyoto Tachibana University because I could work towards obtaining a first-class architectural qualification and because it offers a wide variety of courses, including interior design and environmental design, all in Kyoto, with its beautiful old townscape. Using my own experiences, I also work to support other international students and am involved in extracurricular activities. Communication is essential for architects, as they must interact with experts from a variety of fields. Interacting with others, regardless of faculty or nationality, on our campus, which houses 15 departments in 9 faculties, has been an extremely valuable experience for me.



Faculty of Humanities, Department of History/Fourth year

**Yang Miaomiao** (China)

I chose to study at Kyoto Tachibana University because of my interest in history and women's studies and because I like Kyoto and how you can experience the four seasons here with the many temples and shrines and the Kamo River. Most classes are small, and there are many opportunities to interact with Japanese classmates. I have been able to gain a deeper understanding of Japanese culture. There are also Japanese language classes for international students, and the professors teach the language in a clear, careful way. It has also been comforting to know that I can speak with professors about my student life. I'm so glad I found Kyoto Tachibana University.



## Fulfilling Student Life!

### Ample International Exchange Events

We offer various international exchange events for international and Japanese students. Students can deepen their understanding of various cultures and interact with a wide variety of students through these events.

#### Example of Events

#### ● Welcome and farewell parties for international students

Welcome and farewell parties are hosted by Japanese students, senior students, and university employees. They offer the chance to build connections among students.

#### ● Multicultural Exchange Bus Tours for International and Japanese Students

We regularly offer day trips by bus to deepen students' understanding of Japanese culture.

We visit famous places, mostly in the Kansai region, to experience Japanese history and culture.

(Todai-ji Temple, Ise Grand Shrine, Mt. Hiei Enryakuji Temple, and more.)

#### ● Other Events

We also offer Christmas parties, Halloween parties, seasonal events, sports events with Japanese students, and more.



#### Point

#### ● Buddy System

International students partner with Japanese students and become buddies, interacting with each other based on their goals. Japanese students listen to any questions or concerns the international students may have and offer support for living in Japan, creating an opportunity to expand the friendship.

## Detailed Career Support!

### Kyoto Tachibana University's Total Support for Job Hunting At a Glance

\*Numbers calculated for April 1, 2023 to March 31, 2024

On-campus seminars  
(by companies,  
local governments,  
hospitals, etc.)

▶ Participating companies in AY2023

**417** companies

▶ Participating students in AY2023 (total)

**6,586**

Individual  
interviews

▶ Total in AY2023

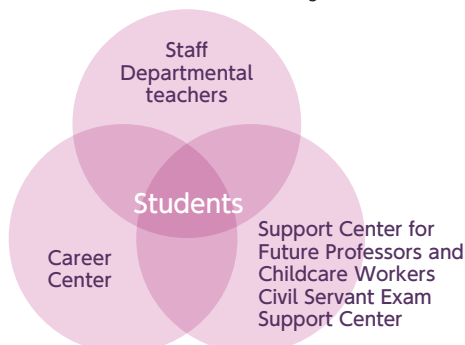
**6,508**

▶ Average number per student that graduated in AY2023

About **6.3** each

### Supporting Every Student in Achieving a Compelling Career Path

Staff from every department work closely together to offer detailed support to each student so that they may craft their own plans for career and life. There are also dedicated staff members for international students at the Career Center so that students can get career advice.



### Employment Rate

Employment rate:

**97.8** %

Number of students seeking employment:

**1,047**

Number of students employed:

**1,024**

More than 90% of students seeking employment are employed each year, reaching an employment rate well above the national average. Students also pass national exams and teacher employment exams at a higher rate than the national average each year.

Satisfaction rate for employment:

**99.3** %

Career development programs are carefully set up for each faculty. Many extracurricular programs have been prepared for different industries and occupations, offering steady support for each student to realize their dreams.



# Information on Entrance Exams for International Students

## Requirements for International Student Applications

Students must meet all of the following requirements.

- Students applying as EJU Applicants must also meet EJU Applicant requirements in addition to the requirements below.

- Students applying as Self-study Applicants must have passed the N2 level of the Japanese Language Proficiency Test (JLPT) or equivalent in addition to the requirements below.

Students must be foreign nationals

Students must correspond to one of the following:

- Students who have completed or will complete the 12th year of a legitimate school education outside Japan by March 31, 2025.
- Students who have completed less than 12 years of legitimate school education outside Japan and have also completed a preparatory course or training course designated by the Minister of Education, Culture, Sports, Science and Technology.  
This also includes students who will complete training by March 31, 2025.
- Students who have passed an examination equivalent to completing 12 years of school education and who will be 18 years old as of March 31, 2025.
- Other students designated by the Minister of Education, Culture, Sports, Science and Technology (students with International Baccalaureate certifications conferred by the International Baccalaureate Organization).
- Students who are recognized as possessing qualifications equivalent to or higher than the above and who will be 18 years old as of March 31, 2025.

\*Applicants applying under requirement e. must contact the Admissions Department at least one month before the start of the application period.

### EJU Applicant Requirements

Applicants must have a score of 225 or higher in Japanese (including writing) from one of the following Examination for Japanese University Admission for International Students (EJU) tests administered by JASSO:

- AY2023 Round One (June) - AY2023 Round Two (November) - AY2024 Round One (June) - AY2024 Round Two (November)"

## Entrance Examination Schedule

Category	Application Period	Examination Date	Announcement day of test results
Round One for EJU Applicants and Self-study Applicants	Wednesday, October 9, 2024 to Wednesday, October 16, 2024	Friday, November 15	Friday, November 29
Round Two for EJU Applicants and Self-study Applicants	Monday, January 6, 2025 to Friday, January 10, 2025	Tuesday, February 11 (public holiday)	Thursday, February 20

\*Applicants cannot apply with multiple application methods or for multiple departments (majors/courses)

## Selection Procedure

Category	Exam Subjects	Time	Selection Procedure
EJU Applicants	Documentary examination	—	Comprehensive evaluation through document screening and interview *Individual interviews include an oral exam
	Interview	About 15 minutes	
Self-study Applicants	Documentary examination	—	Comprehensive evaluation through document screening, Japanese essay exam (100 points), interview, and awarded bonus points (see separate chart below) *Individual interviews include an oral exam"
	Composition written in Japanese	60 minutes	
	Interview	About 15 minutes	

[For Self-study Applicants Only]

Japanese-Language Proficiency Test (JLPT)	N1	N2
Bonus Points	30 points	15 points

## Exam fee ¥15,000

## Previous Prompts (Japanese Essay)

Applicants can request previous prompts for the Japanese essay exams from the Kyoto Tachibana University Admissions page.

We recommend that students considering applying as self-study applicants take advantage of this service.

For more details, please see the 2025 Requirements for International Student Applications, which will be released on the Admissions page at the end of July.

# Student Fees and Scholarships

## | First Year Fees

Faculty	Department	Enrollment fee	Course fee	Educational enhancement fee	Total	Due upon enrollment
Faculty of Engineering	Department of Information and Computer Science	¥200,000	¥1,235,000	¥150,000	¥1,585,000	¥892,500
	Department of Architectural Design	¥200,000	¥1,175,000	¥150,000	¥1,525,000	¥862,500
Faculty of Humanities	Department of Japanese Language and Literature	¥200,000	¥944,000	¥50,000	¥1,194,000	¥697,000
	Department of History	¥200,000	¥944,000	¥50,000	¥1,194,000	¥697,000
	Department of Historical Heritage	¥200,000	¥944,000	¥70,000	¥1,214,000	¥707,000
Faculty of Comprehensive Psychology	Department of Comprehensive Psychology	¥200,000	¥944,000	¥70,000	¥1,214,000	¥707,000
Faculty of Economics	Department of Economics	¥200,000	¥870,000	¥50,000	¥1,120,000	¥660,000
Faculty of Business Administration	Department of Business Administration	¥200,000	¥870,000	¥50,000	¥1,120,000	¥660,000

## | Scholarships \*Scholarships require an application after enrollment (subject to an assessment of the student's financial situation, grades, etc.)

**Reduction of 30%** in annual tuition fees for international students studying at their own expense (¥283,200 to ¥370,500/year)

**Stipend scholarship** for international students studying at their own expense (**¥20,000/month**) (¥240,000/year, ¥960,000/four years)

Other internal and outside scholarships available



### Open Campus Event

**6/9(SUN) 7/21(SUN) 8/3(SAT) • 4(SUN) • 25(SUN)**

### PROGRAM

University introduction and entrance exam briefing  
 Departmental guidance, mini-lecture, hands-on learning  
 Individual counseling with international student representatives  
 Facility tours  
 Campus tour  
 Student-led campus life introduction  
 Individual consultations  
 Dining hall experience  
 Club planning

Scan this QR code for more details and to apply



Scan this QR code for information on entrance exams for international students

# Access

## Access to closest stations

- 5 minutes from JR Kyoto Station to Yamashina Station
- 35 minutes from JR Osaka Station to Yamashina Station by special rapid service
- Approximately 1 hour from JR Sannomiya Station to Yamashina Station

## Access to campus from closest stations

- Approximately 15 minutes by direct bus from Yamashina Station
- Approximately 25 minutes by direct bus from Kyoto Station

## Access to campus from Nagitsuji Station on the subway

- Get off at Nagitsuji Station on the Kyoto Municipal Subway Tozai Line and Walk east for about 15 minutes
- About 8 minutes by free shuttle bus from Aeon Town Yamashina Nagitsuji



Kyoto Tachibana University Campus Website  
Visit for directions and transportation

## We also offer housing support for international students



たちばなリンク  
TACHIBANA LINK Co., Ltd.



京都橘学園生活協同組合  
Kyoto Tachibana University CO-OP

## Kyoto Tachibana University Official SNS

LINE



Instagram



X  
(旧Twitter)



## Inquiries



京都橘大学  
KYOTO TACHIBANA UNIVERSITY

京都橘大学 国際系学部グループ  
〒607-8175 京都市山科区大宅山田町 34

☎ 075-574-4365

☎ 075-574-4126

✉ aca-gl@tachibana-u.ac.jp

Academic Affairs Global Education  
Kyoto Tachibana University  
34 Yamada-cho, Oyake, Yamashina-ku,  
Kyoto, 607-8175, Japan